



OGene 即時通訊 APP 使用者手冊（V1.0）

更新日期：2025 年 8 月 21 日

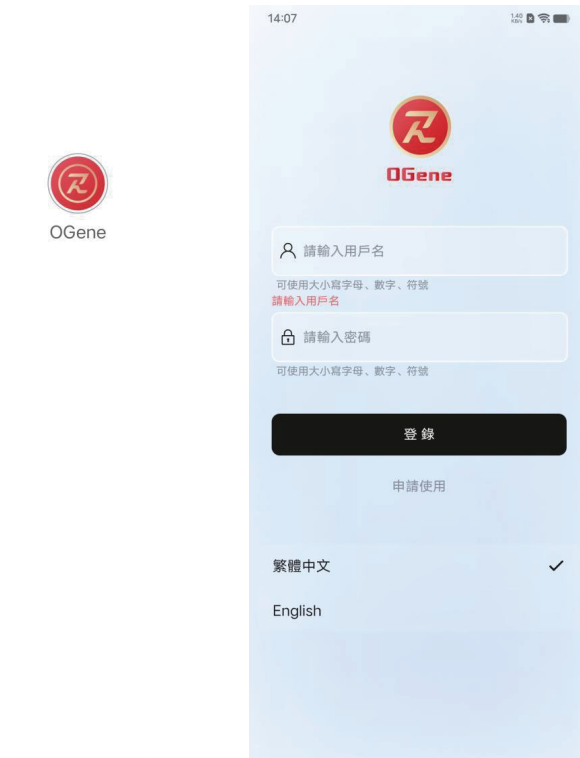
目錄

- 1. 關於 OGene ..... 2
- 2. 註冊与登錄 ..... 3
  - 2.1 註冊賬號 ..... 3
  - 2.2 登錄模式選擇 ..... 4
- 3. 個人信息管理 ..... 5
- 4. 好友管理 ..... 6
  - 4.1 添加好友 ..... 6
  - 4.2 好友管理 ..... 7
- 5. 即時通訊功能 ..... 8
  - 5.1 發送訊息 ..... 8
  - 5.2 語音消息与變聲 ..... 9
  - 5.3 語音通話 ..... 10
  - 5.4 閱後即焚 ..... 11
  - 5.5 文件傳輸 ..... 12
  - 5.6 群聊功能 ..... 13
- 6. 設置與管理 ..... 14
  - 6.1 賬號安全中心 ..... 14
  - 6.2 通用 ..... 15
  - 6.3 通知 ..... 16
  - 6.4 關於 OGene ..... 17
  - 6.5 退出登錄 ..... 18



## 1. 關於 OGene

OGene是一款以安全為核心的去中心化即時通訊軟體，具備端對端加密、多登錄模式、豐富通訊功能及資料安全儲存等特性，致力於提供使用者隱私保護與高效通訊體驗。

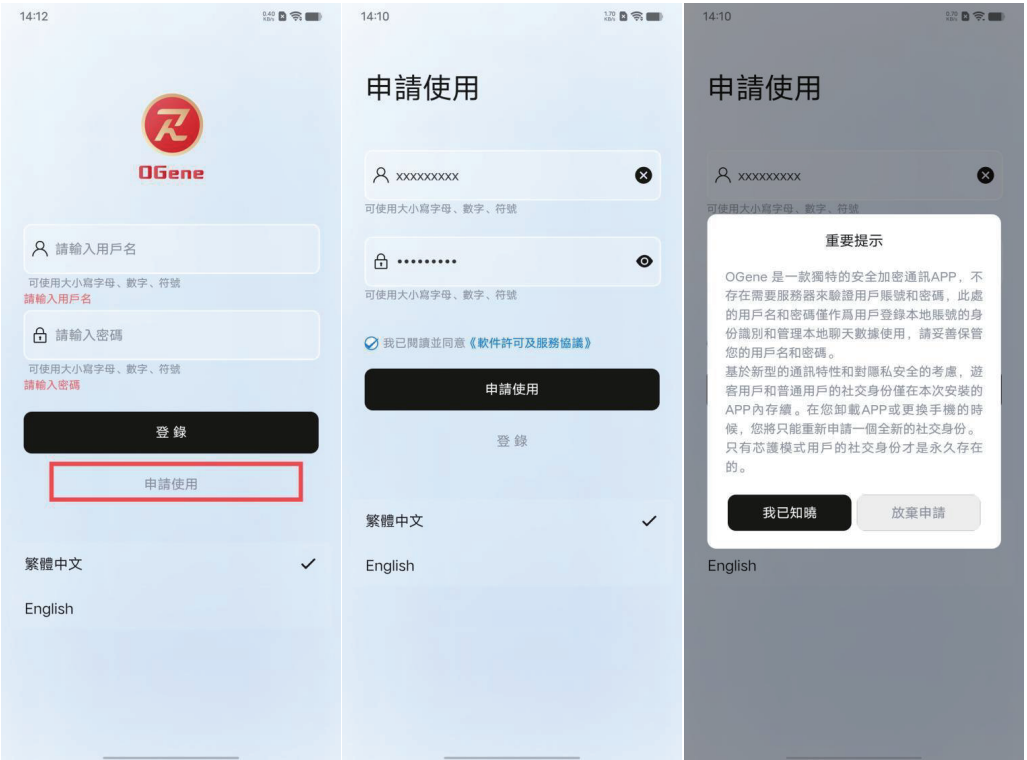


## 2. 注册與登錄

### 2.1 注册賬號

操作步驟：

1. 打開 APP，點選首頁「申請使用」按鈕。
2. 輸入自訂使用者名稱（提交後不可修改）及密碼，點選“申請使用”
- 3.註冊成功後，自動跳轉至登錄頁面。



## 2.2 登錄模式選擇

操作步驟：

1. 在登錄頁面輸入使用者名稱和密碼，點選“登錄”。

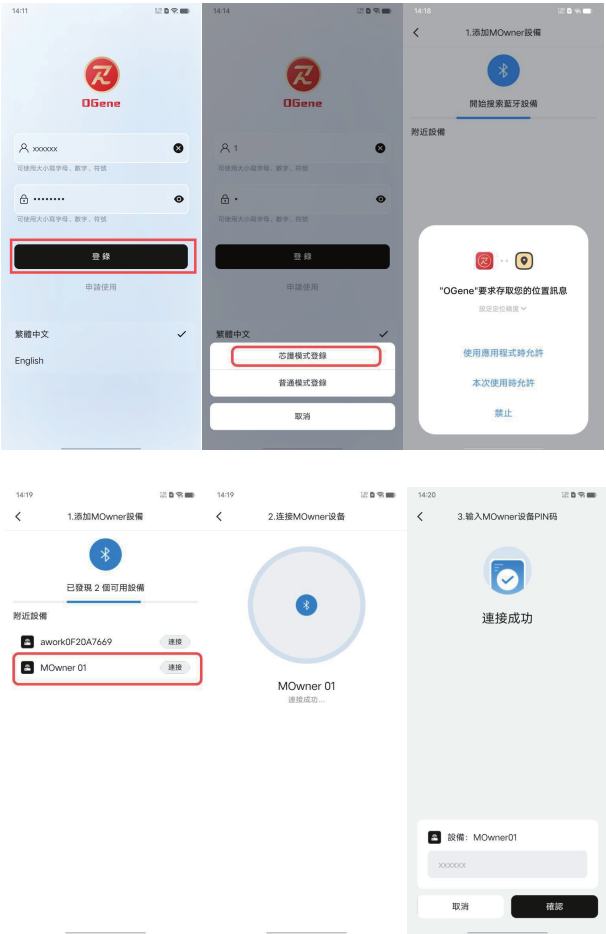
2.選擇登錄模式：

- 芯護模式：需開啟手機藍牙，跳到「新增 MOwner 設備」頁面，連接藍牙設備 MOwner 並輸入 PIN 碼，啟用硬體加密保護（對應通訊版/專業版，介面風格為深藍色/黑金色）。

-預設初始 PIN 碼為 “123456”，注意：初始 PIN 碼登入後請在 APP 設定中修改 PIN 碼以保資訊安全，修改後需牢記，遺忘無法找回。

-普通模式：直接登錄（對應遊客版/普通版，介面風格為灰白色等），僅使用常規加密。

-取消：登出登錄選擇頁面。

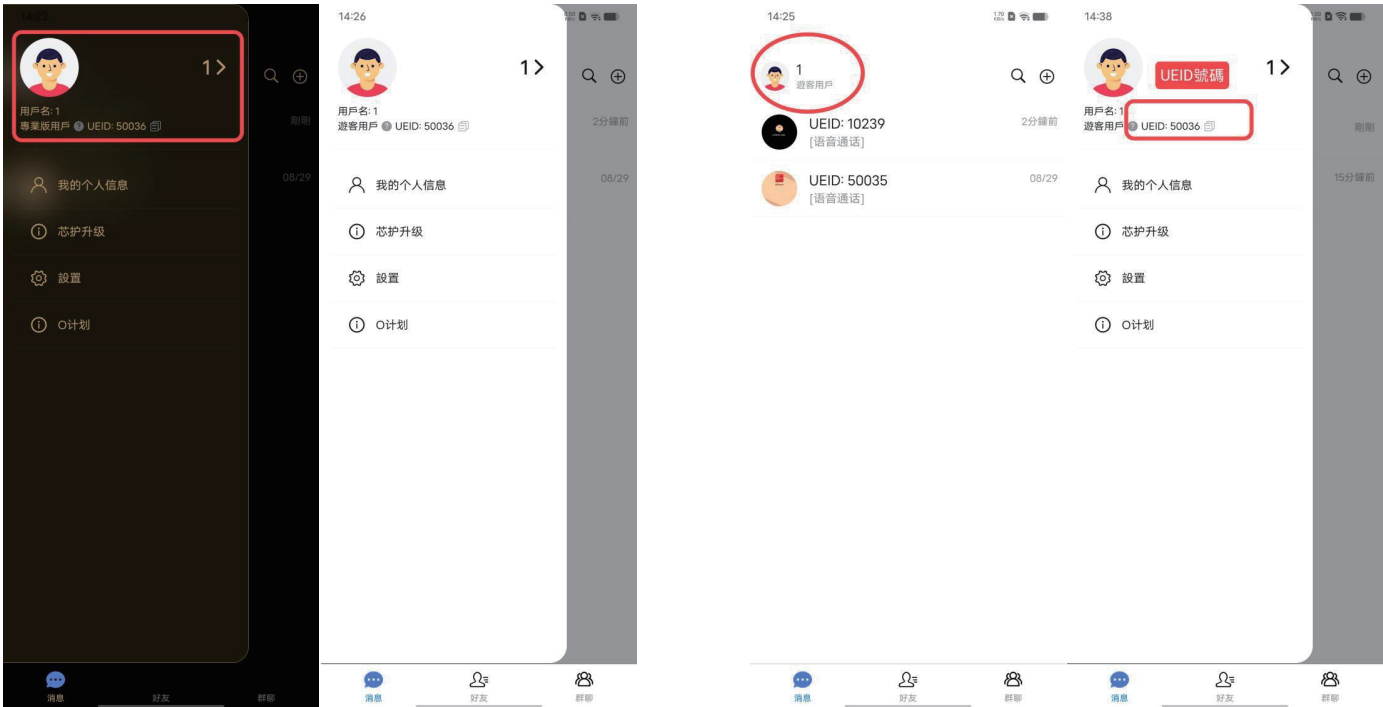


### 3.個人信息管理

操作路徑： 主介面點選“使用者頭像”→“我的個人資訊”

可管理資訊如下： - 頭像：支援更換系統預設頭像或自訂相簿頭像（僅對好友可見

- 使用者名稱：僅可查看，不可修改（對外不可見）。
- 簽名：支援修改個性簽名（對外不可見）。
- UEID 號：註冊後自動產生的唯一識別碼（僅用於新增好友，對外可見）。
- 身分：顯示目前使用者模式（遊客/普通/通訊版/專業版）。

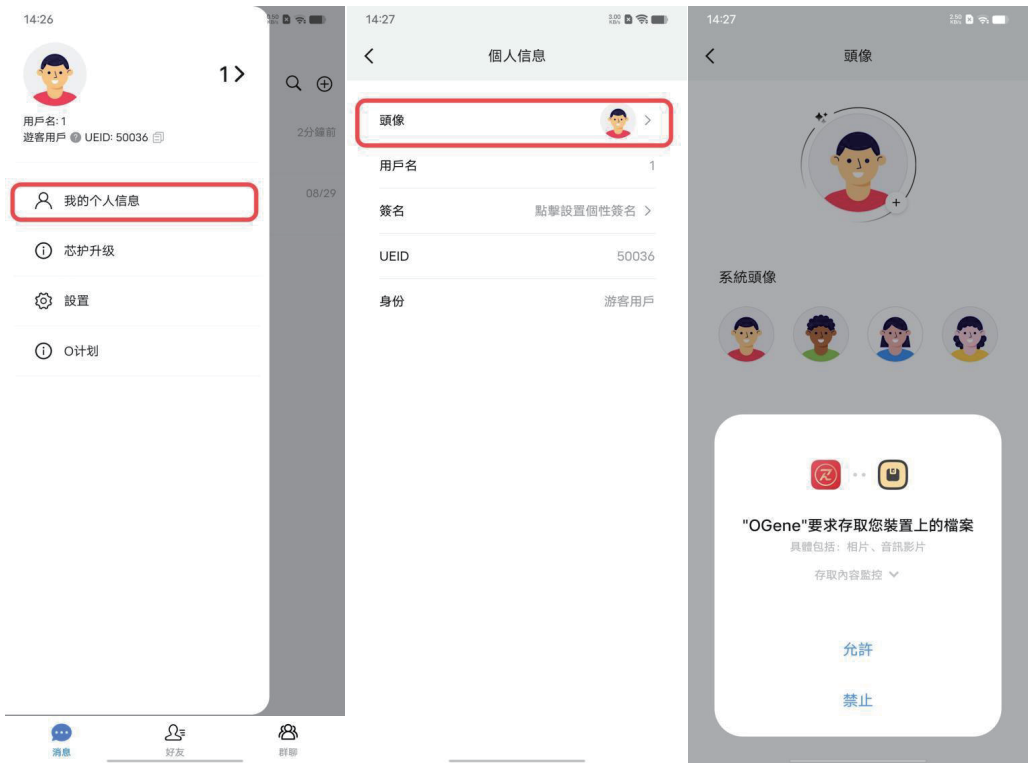


## 4. 好友管理

### 4.1 添加好友

操作路徑：主介面右上角“+”→“新增好友”，或“好友”模組右上角“+”→“新增好友”  
操作步驟：

1. 輸入好友 5 位 UEID 號，點選「搜尋」。
2. 配對成功後，點擊“新增”，可填寫申請理由（可選）。
3. 對方同意後，好友關係建立。

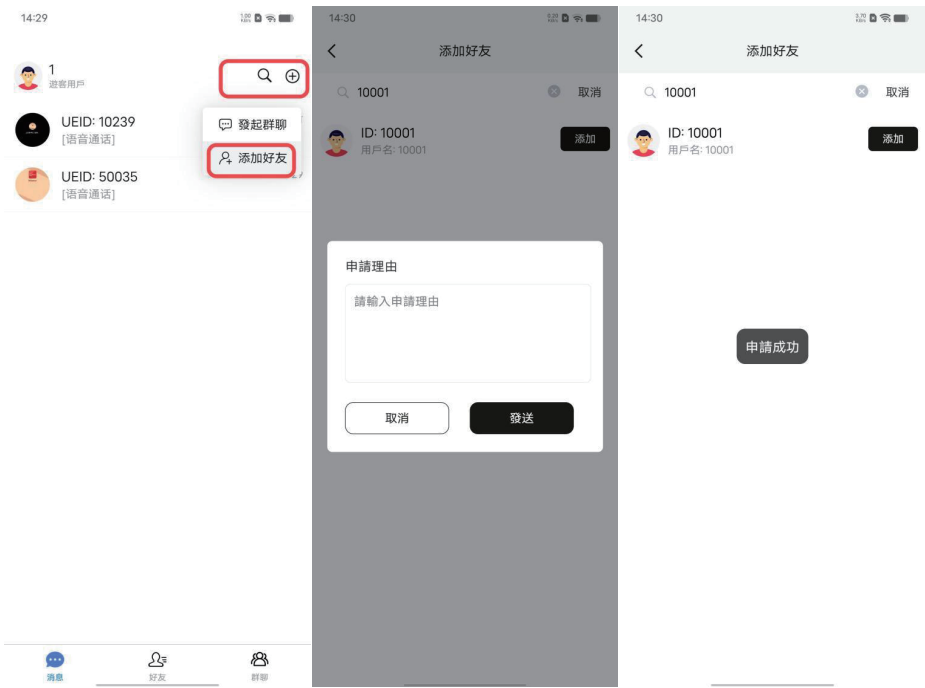


## 4.2 好友管理

操作路徑： 主介面底端「好友」模組

功能說明：

- 查看“好友申請”，可選擇“同意”或“拒絕”。
- 查看好友列表，選擇好友後可進行：
  - 發送訊息
  - 查看好友資訊
  - 修改備註名
  - 刪除好友（同時刪除聊天記錄，可重新新增）
  - 封鎖好友（刪除好友且禁止對方再添加，防騷擾）
  - 申訴用戶



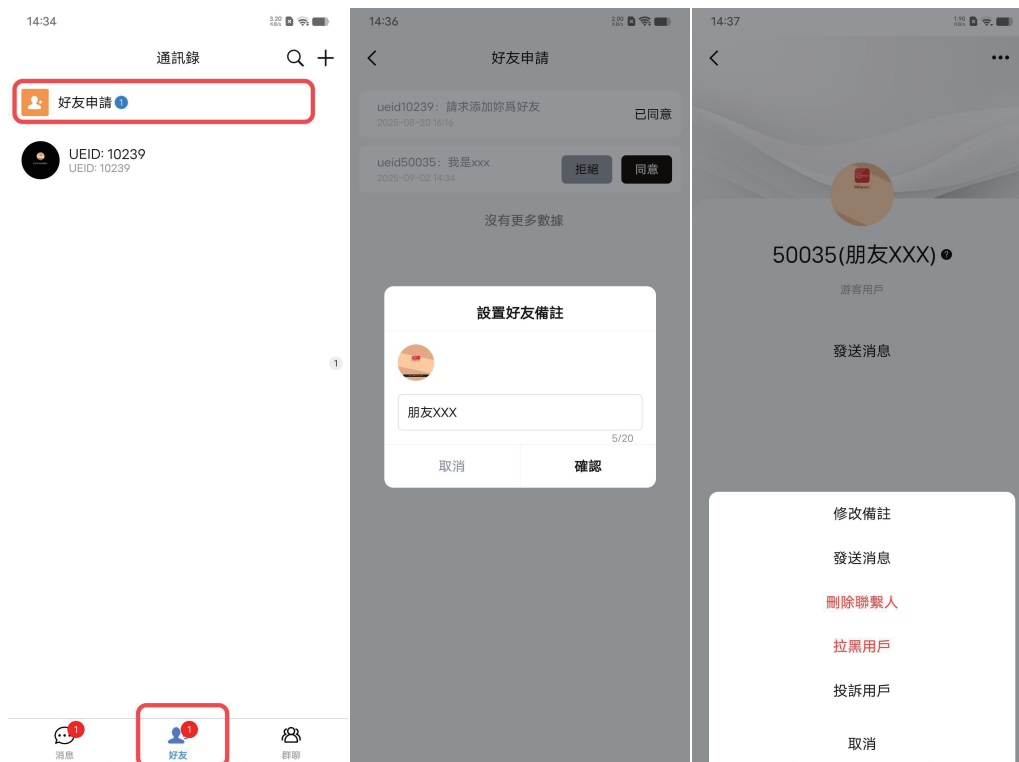
## 5. 即時通訊功能

### 5.1 發送訊息

操作路徑：主介面底端「訊息」模組→進入好友聊天窗口

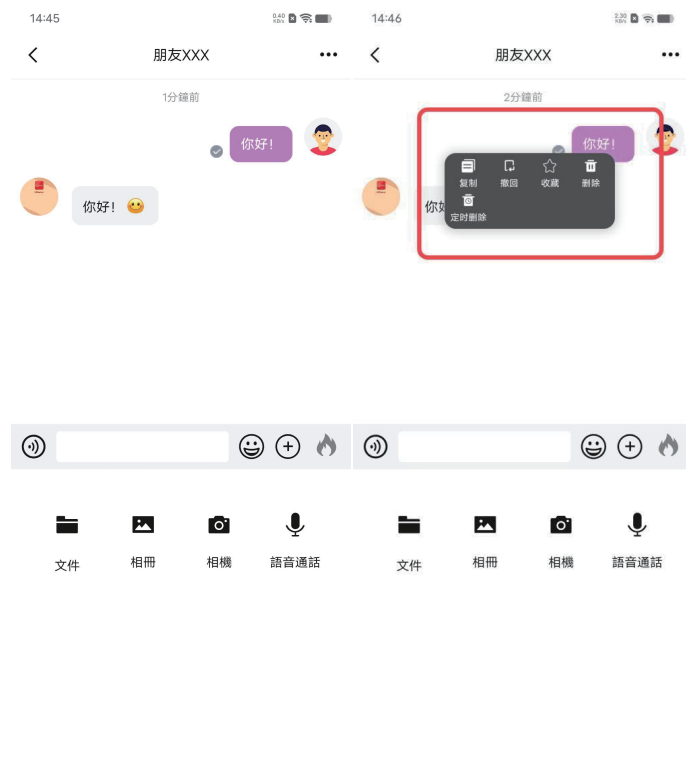
功能說明：

1. 輸入文字，或點選「+」選擇相簿、拍攝、檔案、語音通話。
2. 發送後可查看訊息狀態（已傳送/已讀/未讀）。
3. 長按訊息可選擇：複製、引用、收藏、刪除、定時刪除（12/24 小時後自動刪除己方訊息，不影響對方）。



## 5.2 語音訊息與變聲

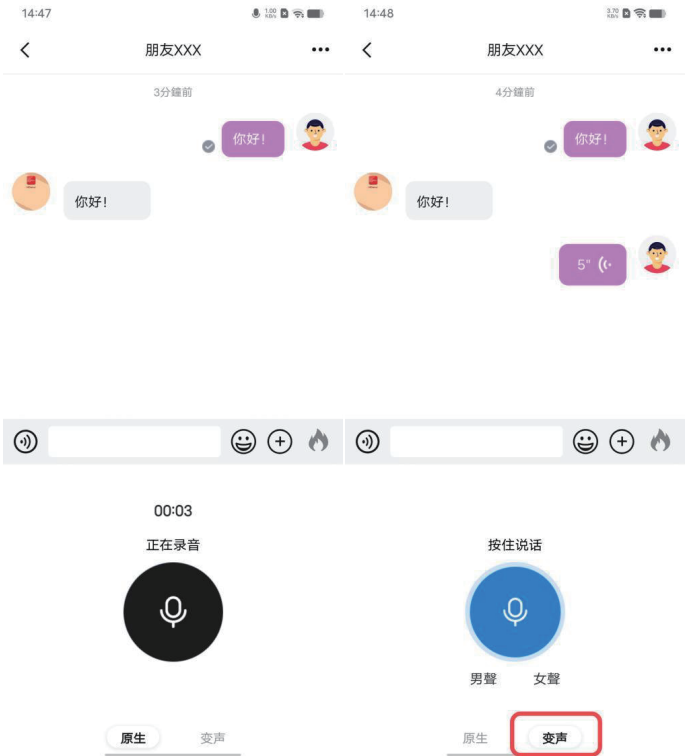
1. 點選聊天視窗「語音」圖標，長按「麥克風」錄入訊息，放開即發送。
2. 支援原聲及變聲（模擬男聲/模擬女聲），預設變聲效果可在「設定→通用→預設變聲設定」中配置。





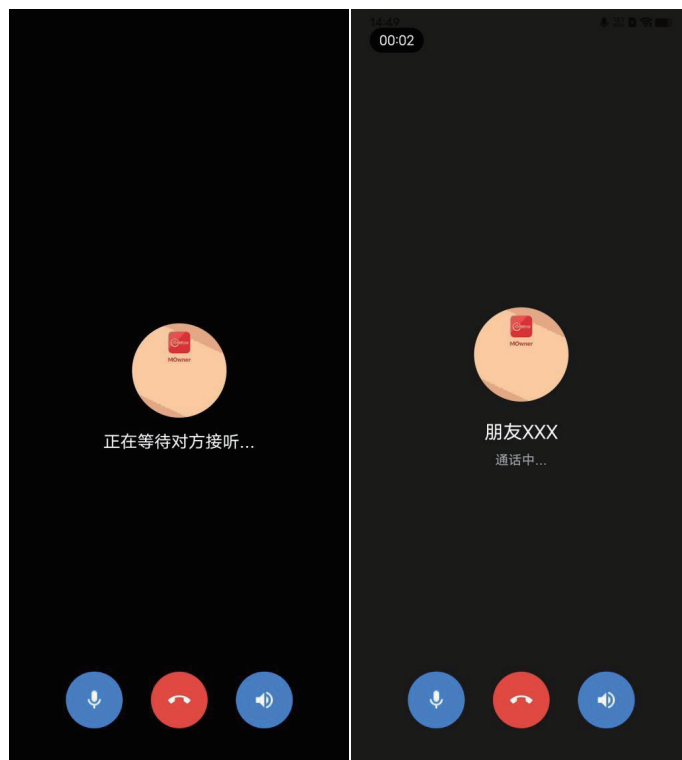
5.3 語音通話

操作步驟： 聊天視窗點擊 “+” → “語音通話”，向好友發起邀請，對方同意後即可即時通話。



## 5.4 閱後即焚

1. 聊天視窗點選「閱後即焚火焰」圖示（點亮為開啟，灰色為關閉）。
2. 開啟後可設定銷毀時間（預設 5 秒），發送訊息。
3. 接收者閱讀後，訊息將按設定時間倒數並自動銷毀（發送方的閱後即焚訊息不銷毀）。



## 5.5 文件傳輸

1. 聊天視窗點擊“+”→“檔案”，選擇手機內檔案上傳。
2. 支援最大 10M 檔案傳輸，傳輸過程中顯示進度條。



## 5.6 群聊功能

操作路徑：主介面右上角“+”→“發起群聊”，或“群聊”模組右上角“+”→“發起群聊”  
操作步驟：

1. 預設以建立者暱稱命名群組聊，可修改群組名稱後點選「提交」。
2. 選擇新增群組成員。
3. 後續可修改群組資料（如群組名稱、備註）。
4. 群組主可解散群組，成員可隨時退出群組聊天。



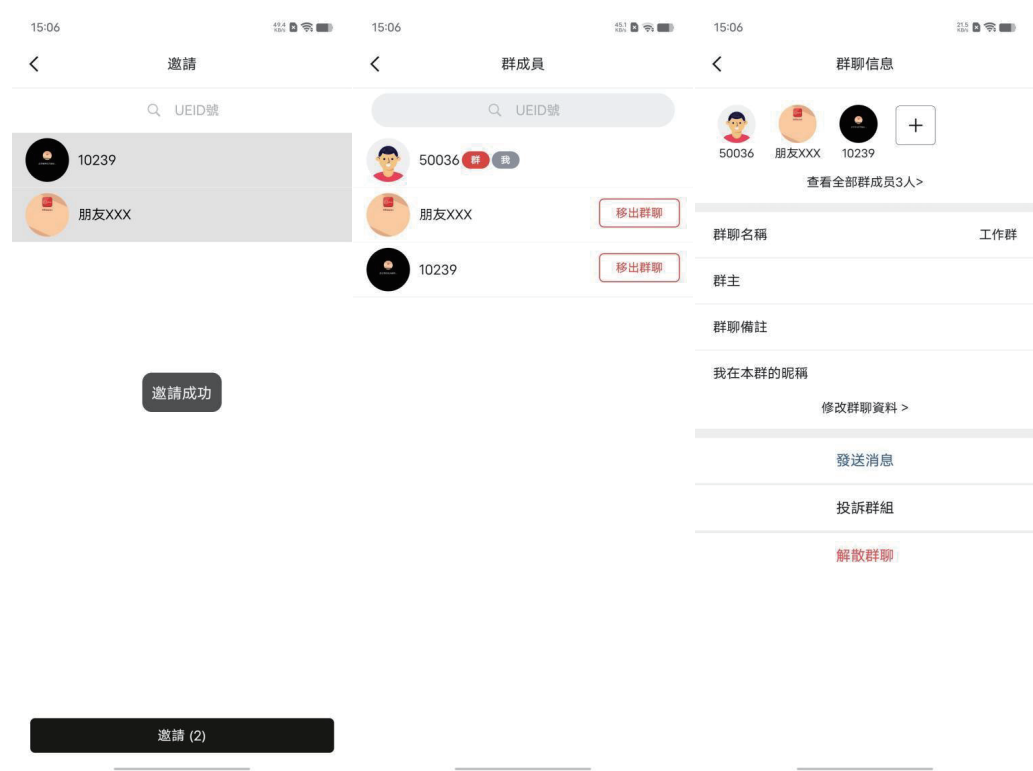
6. 設定與管理

6.1 帳號安全中心

操作路徑： 主介面 “使用者頭像” → “設定” → “帳號安全中心”

功能：

- 修改登錄密碼
- 註銷帳號（刪除所有聊天記錄，可重新登錄）。

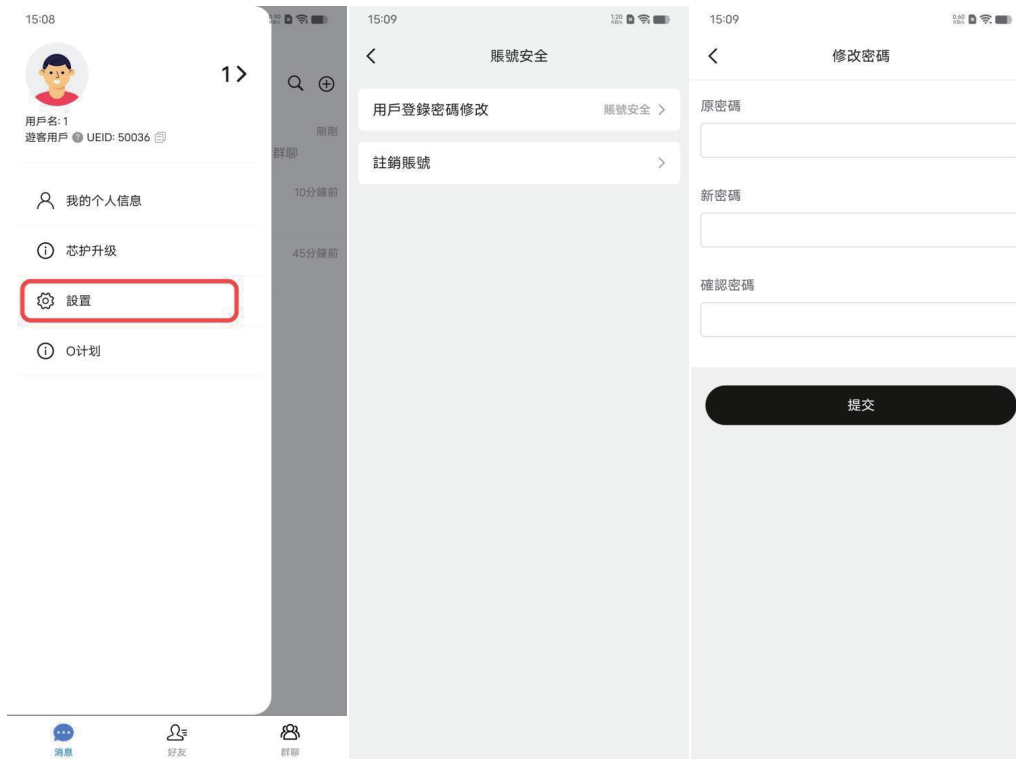


## 6.2 通用

操作路徑： 主介面“使用者頭像”→“設定”→“通用”

功能：

- 顯示語言：支援切換至繁體中文/英文。
- 預設變聲設定：配置語音訊息預設變聲效果（男聲/女聲）。
- 刪除全部聊天記錄（不可恢復）。
- 清理快取（不影響 APP 使用）。



### 6.3 通知

操作路徑： 主介面“使用者頭像” → “設定” → “通知”

功能：設定訊息橫幅通知及內容預覽顯示開關。

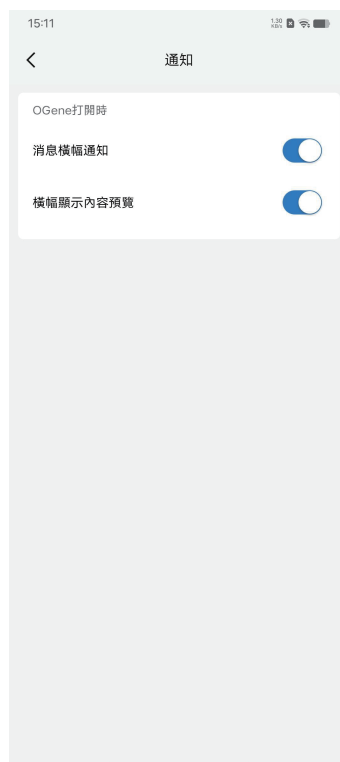


## 6.4 關於 OGene

操作路徑： 主介面“使用者頭像” → “設定” → “關於 OGene”

功能：

- 查看版本資訊及更新入口
- 查閱權限聲明、隱私權政策、資料權限使用聲明。
- 存取「幫助與回饋」（含常見問題、公司聯絡資訊及問題回饋入口）。

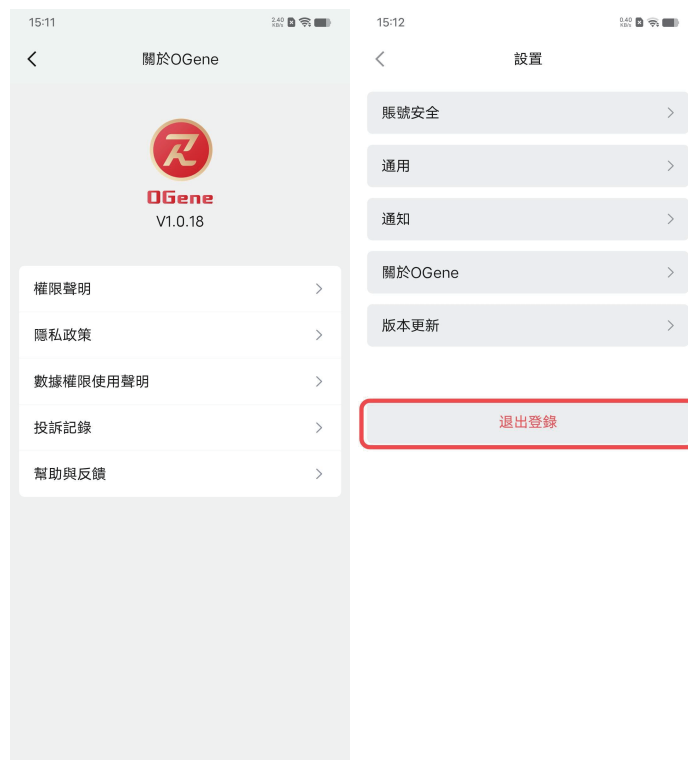




## 6.5 登出登錄

操作路徑：主介面“使用者頭像”→“設定”→“登出”

功能：登出目前帳號，返回登錄首頁。



# OGene APP User Manual (V1.0)

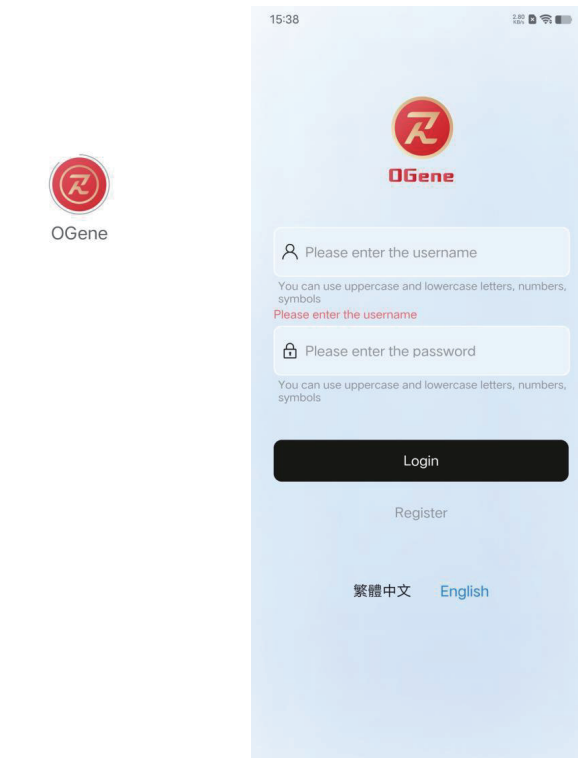
Update Date: September 4th, 2025

## Catalogue

1. About OGene .....	20
2. Registration and Login .....	21
2.1 Register an account .....	21
2.2 User mode selection .....	22
3. Personal Information Management .....	24
4. Friend Management .....	25
4.1 Adding Friends .....	25
4.2 Friend Management .....	26
5. Instant messaging function .....	27
5.1 Sending Information .....	27
5.2 Voice Information and Voice Transformation .....	28
5.3 Voice Call .....	29
5.4 Burning immediately after reading .....	30
5.5 File Transfer .....	31
5.6 Group chat function .....	32
6. Setting and Management .....	33
6.1 Account Security Center .....	33
6.2 General .....	34
6.3 Notice .....	35
6.4 About OGene .....	36
6.5 Log out .....	37

## 1. About OGene

OGene is a decentralized instant messaging software with security as its core, featuring P2P encryption, multi user mode, diverse communication functions, and secure data storage. It is committed to providing users with privacy protection and efficient communication experience.



## 2. Registration and Login

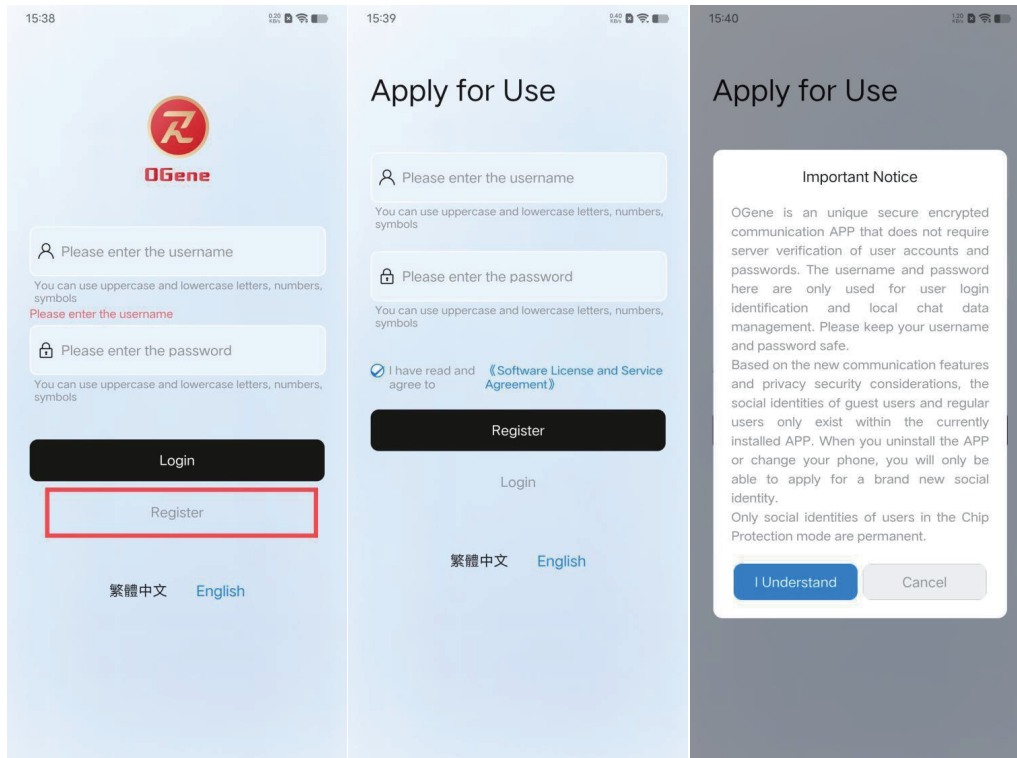
### 2.1 Register an account

Operation steps:

1. Open the OGene APP, Click on the 'Register' button on the homepage.

2. Enter the custom username (which cannot be modified after submission) and password, and click "Register"

After successful registration, it will automatically redirect to the login page.



## 2.2 User mode selection

Operation steps:

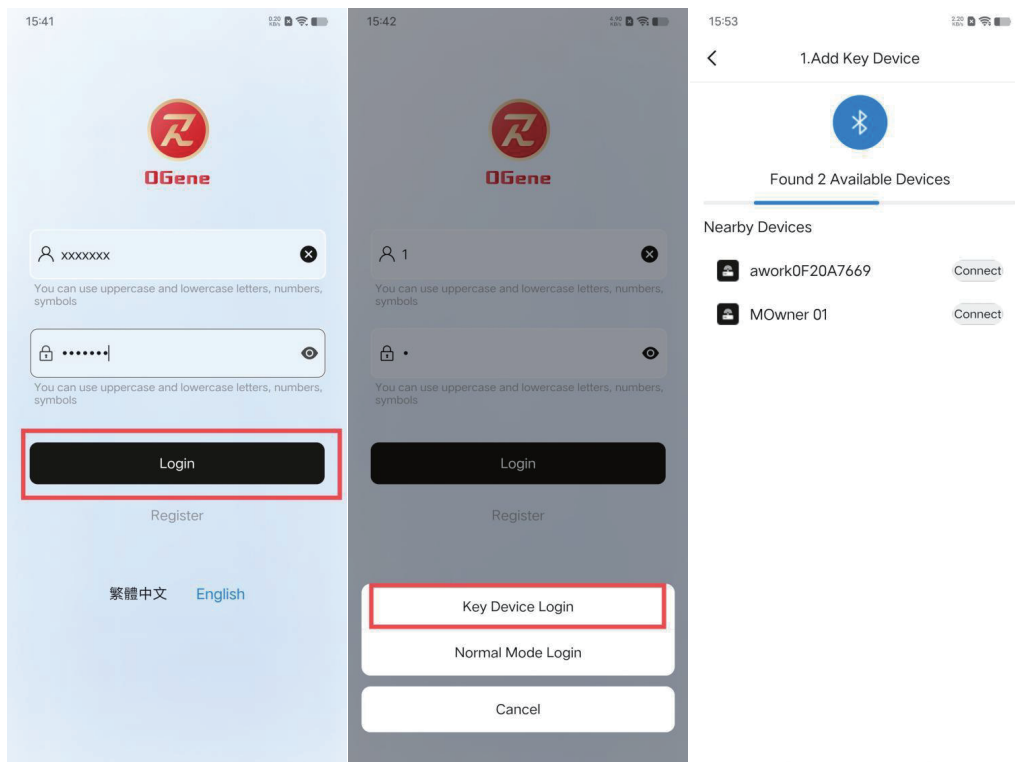
1. Enter the username and password on the login page, and click "Login".

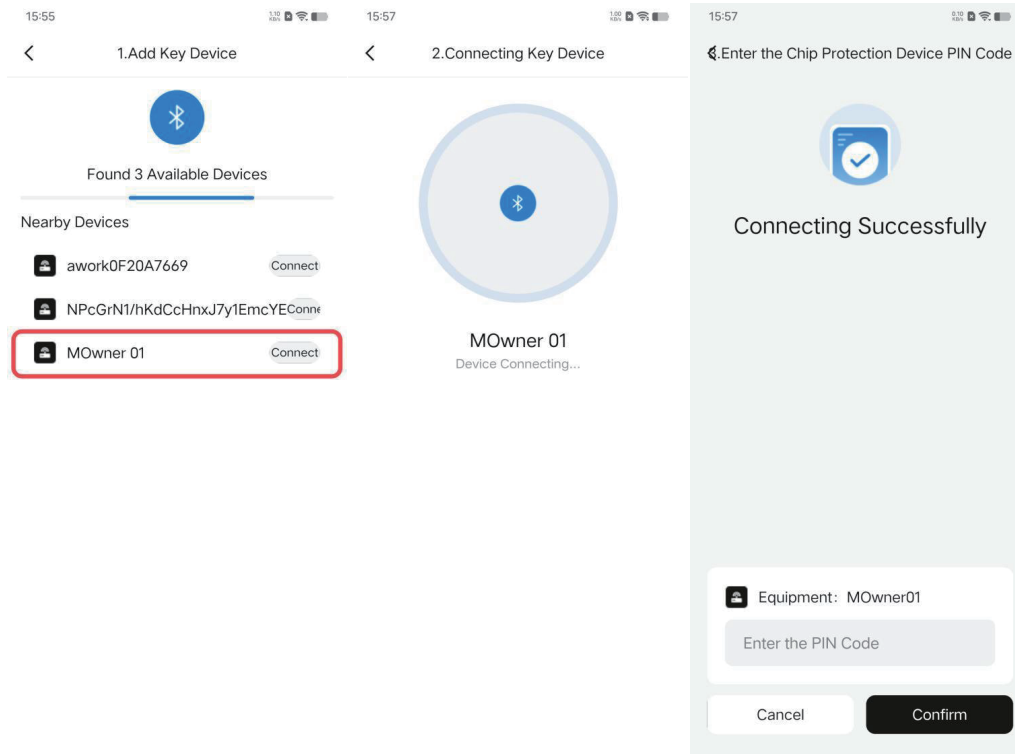
2. Choose user mode:

-Core protection mode: Click "Key Device Login", Bluetooth on the phone needs to be turned on, jump to 'Add' MOwner Device "page, connect Bluetooth device MOwner And enter PIN (The default initial PiN code is "123456") Code, enable hardware encryption protection (corresponding to communication version/professional version, interface style is dark blue/black gold).

-Normal mode: Direct login (corresponding to the tourist version/normal version, with a gray white interface style, etc.), using only regular encryption.

-Cancel: Log out from the login selection page.





### 3. Personal Information Management

Operation path: Click on "User Profile" on the main interface → "My Personal Information".

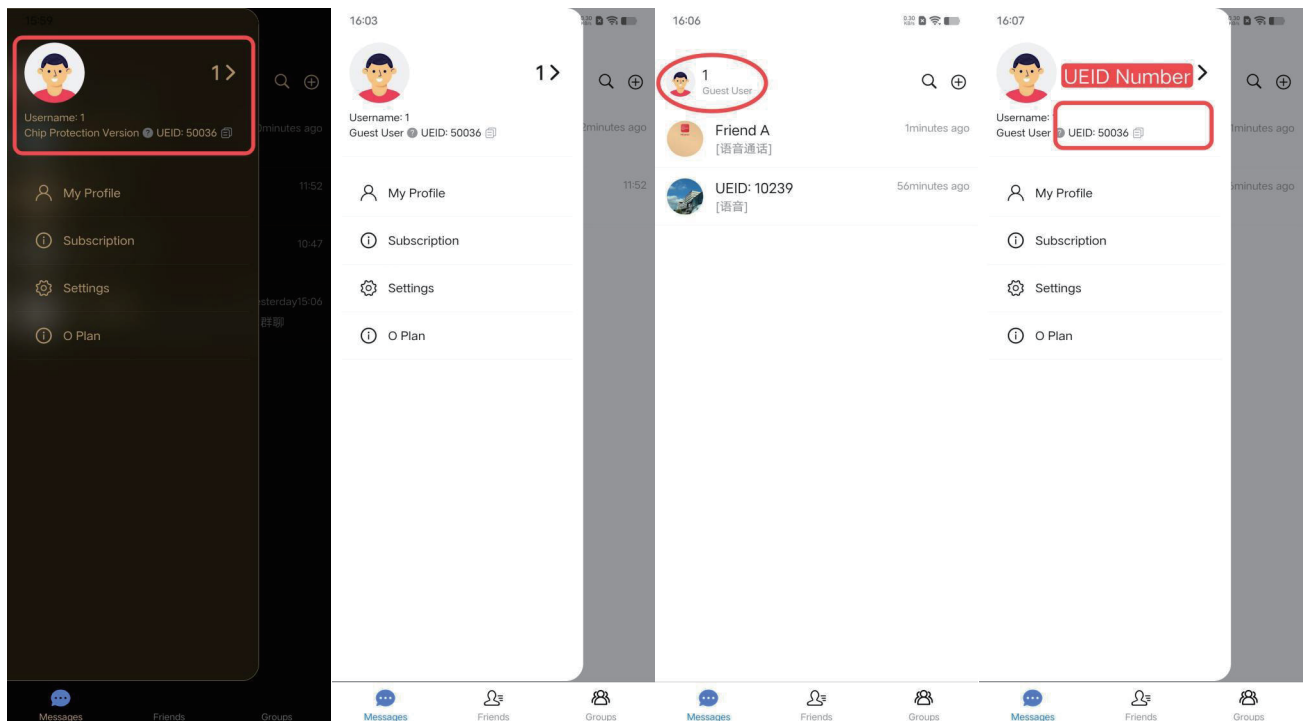
The following information can be managed: - Avatar: supports changing system preset avatars or customizing album avatars (only visible to friends).

-User Name: Can only be viewed and cannot be modified (not visible to the public).

-Signature: Supports modifying personalized signatures (not visible to the public).

- UEID: The unique identification code generated automatically after registration (only used for adding friends, visible to the public).

-Identity: Display the current user mode (tourist/regular/communication version/professional version).



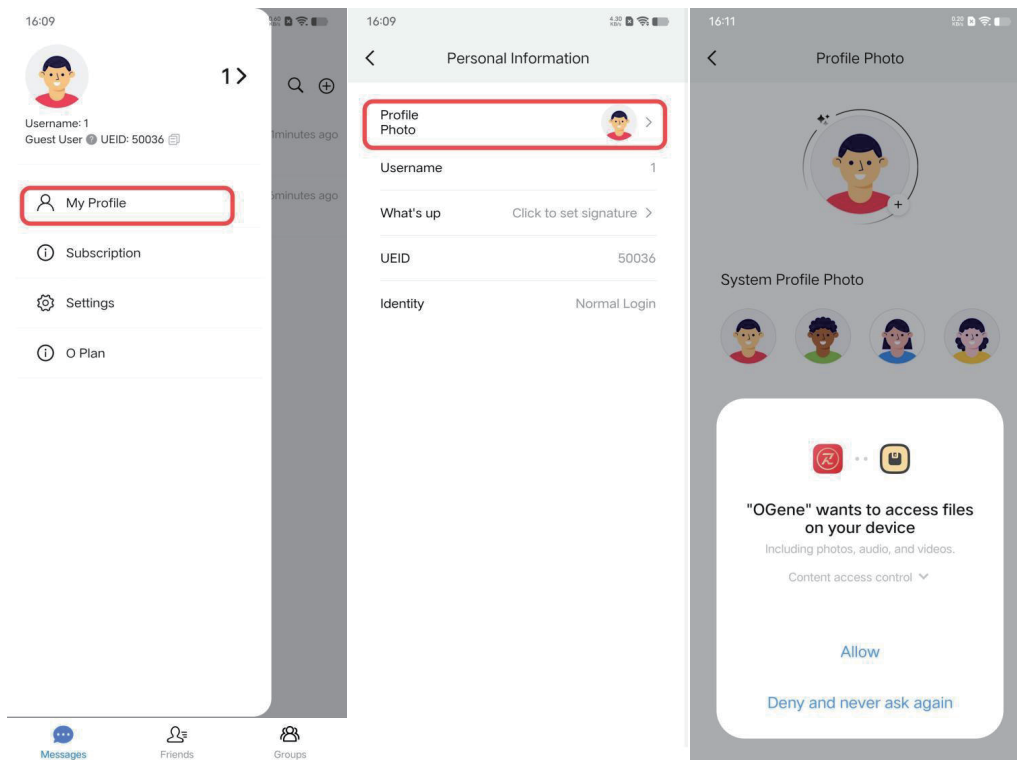
## 4. Friend Management

### 4.1 Adding Friends

Operation path: "+" -> "Add friend" in the upper right corner of the main interface, or "+" -> "Add friend" in the upper right corner of the "Friends" module

Operation steps:

1. Enter 5-digit UEID, click on 'Search'.
2. After successful pairing, click "Add" to fill in the application reason (optional).
3. After the other party agrees, a friendship relationship is established.



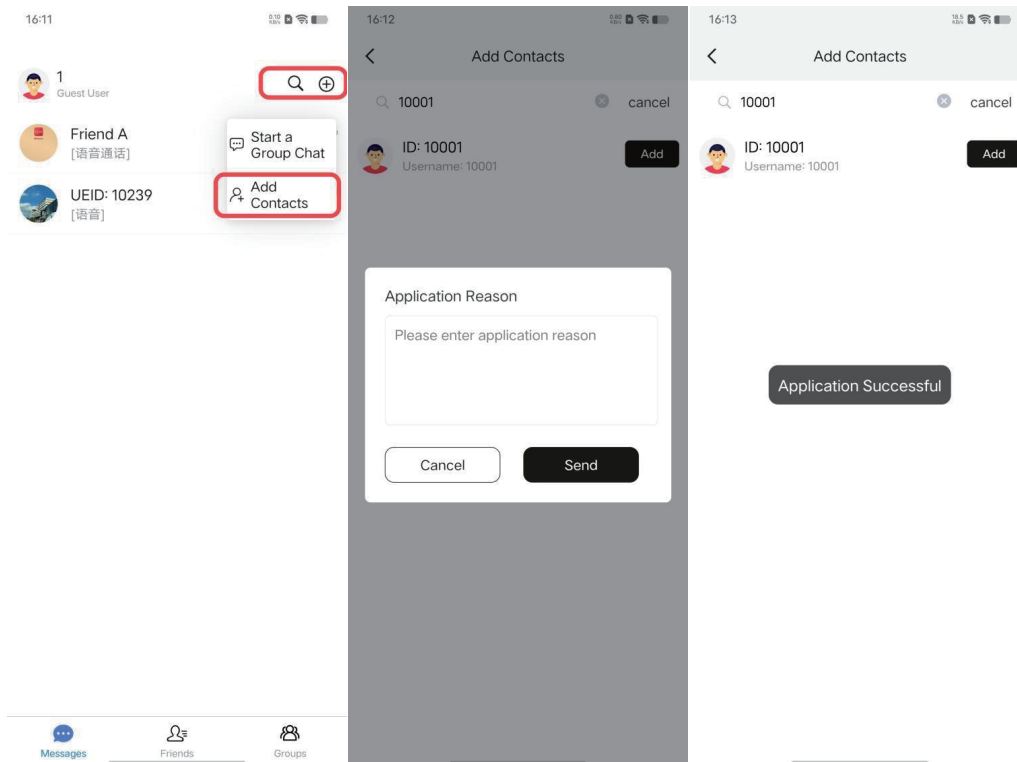


## 4.2 Friend Management

Operation path: "Friends" module at the bottom of the main interface

Function Description:

- View the 'Friend Request' and select 'Agree' or 'Reject'.
- View the friend list and select a friend to:
- Send a message
- View friend information
- Change the note name
- Delete friend (also delete chat history, can be re added)
- Block friends (delete friends and prohibit others from adding them again to prevent harassment)
- Appeal user



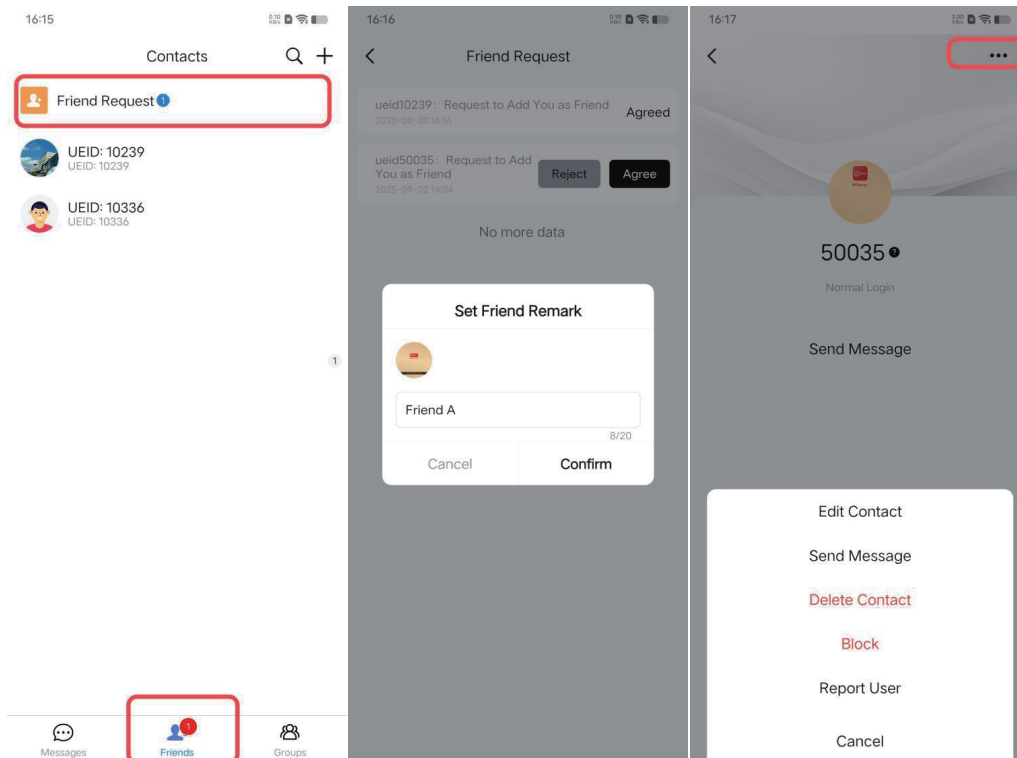
## 5. Instant messaging function

### 5.1 Sending Information

Operation path: "Information" module at the bottom of the main interface → Enter the friend chat window

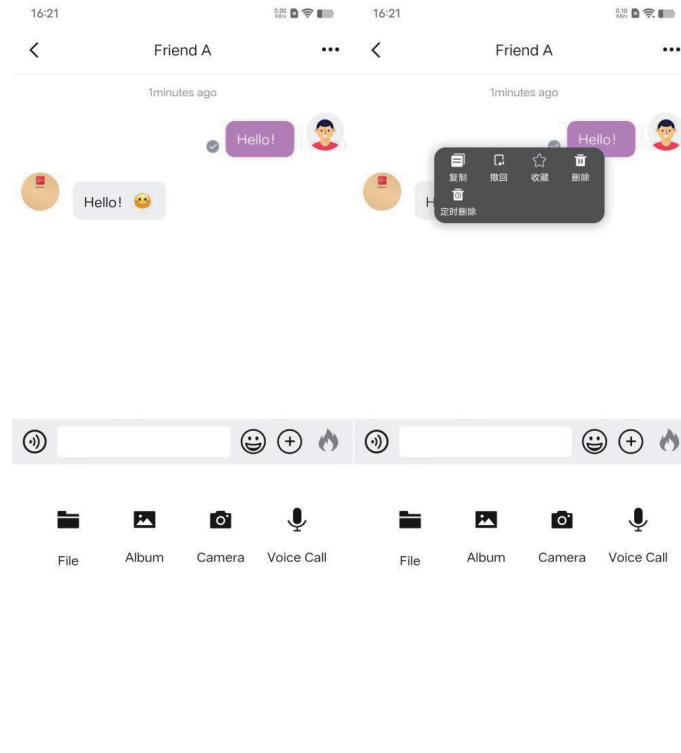
Function Description:

1. Enter text or click "+" to select album, shoot, file, or voice call.
2. After sending, you can check the status of the information (sent/read/unread).
3. Long press the information to choose from: copy, reference, bookmark, delete, and timed delete (automatically delete one's own information after 12/24 hours, without affecting the other party).



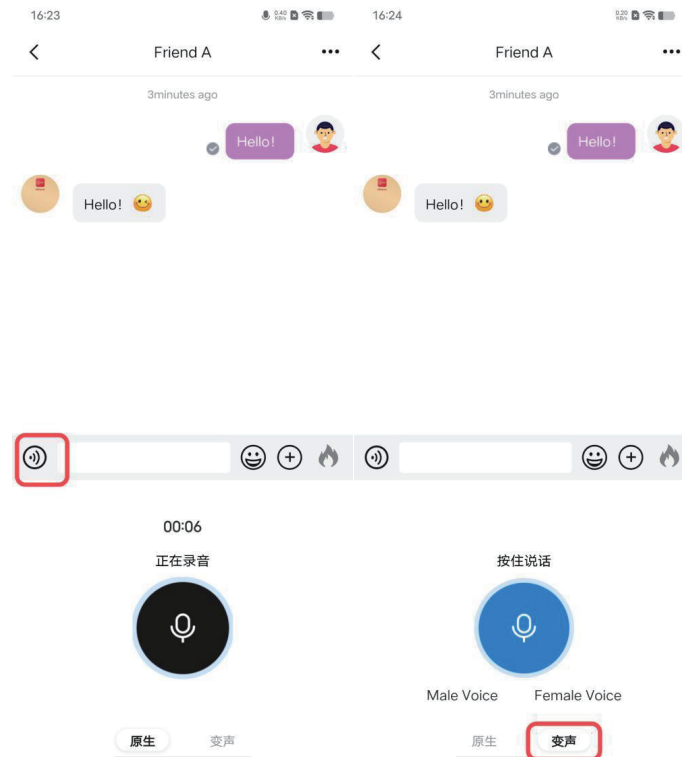
## 5.2 Voice Information and Voice Transformation

1. Click on the "Voice" icon in the chat window, long press the "Microphone" to enter information, and release it to send.
2. Supports original sound and voice changing (simulating male/female voice), and the preset voice changing effect can be configured in "Settings → General → preset voice changing settings".



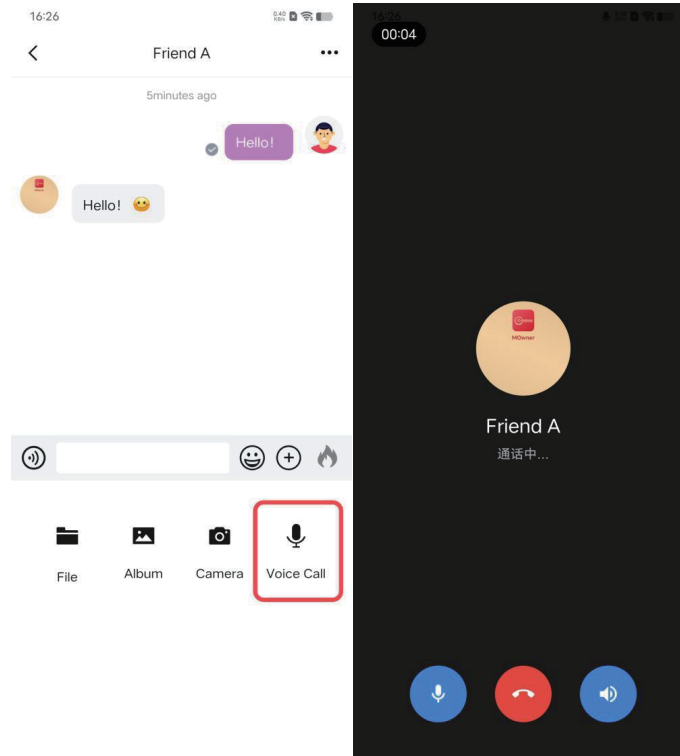
### 5.3 Voice Call

Operation steps: Click "+" ->"Voice Call" in the chat window to invite a friend. After the other party agrees, you can make an instant call.



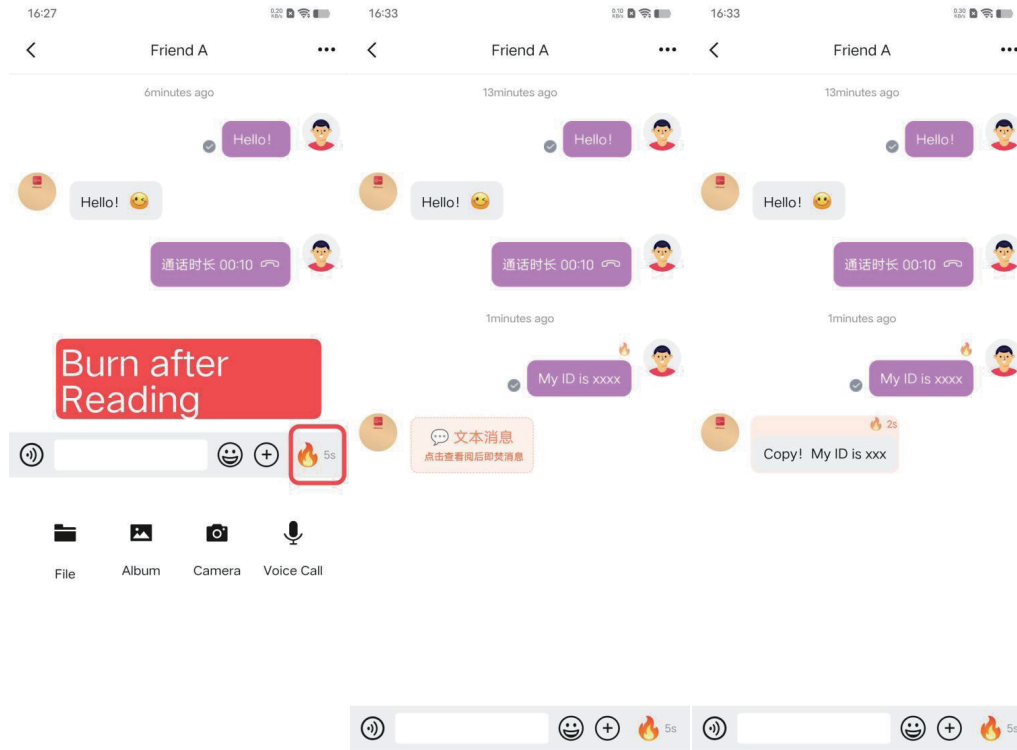
## 5.4 Burning immediately after reading

1. Click on the "Burn Flame After Reading" icon in the chat window (lit to turn on, gray to turn off).
2. After activation, the destruction time can be set (preset 5 seconds) and a message can be sent.
3. After the receiver reads, the information will be counted down according to the set time and automatically destroyed (the sender's information will not be destroyed immediately after reading).



## 5.5 File Transfer

1. Click on "+" -> "Files" in the chat window, and select "Upload Files" on your phone.
2. Supports up to 10 M File transfer, display progress bar during the transfer process.

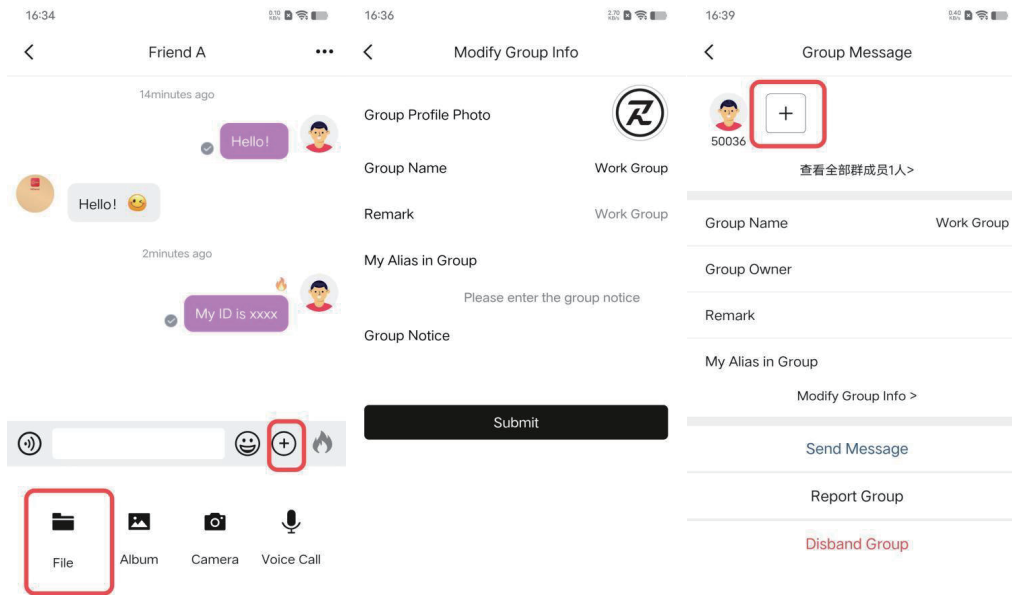


## 5.6 Group chat function

Operation path: "+" ->"Initiate Group Chat" in the upper right corner of the main interface, or "+" ->"Initiate Group Chat" in the upper right corner of the "Group Chat" module

Operation steps:

1. The default group chat is named after the creator's nickname. After modifying the group name, click "Submit".
2. Choose to add new group members.
3. Group data can be modified in the future (such as group name, comments).
4. The group owner can dissolve the group, and members can exit the group chat at any time.



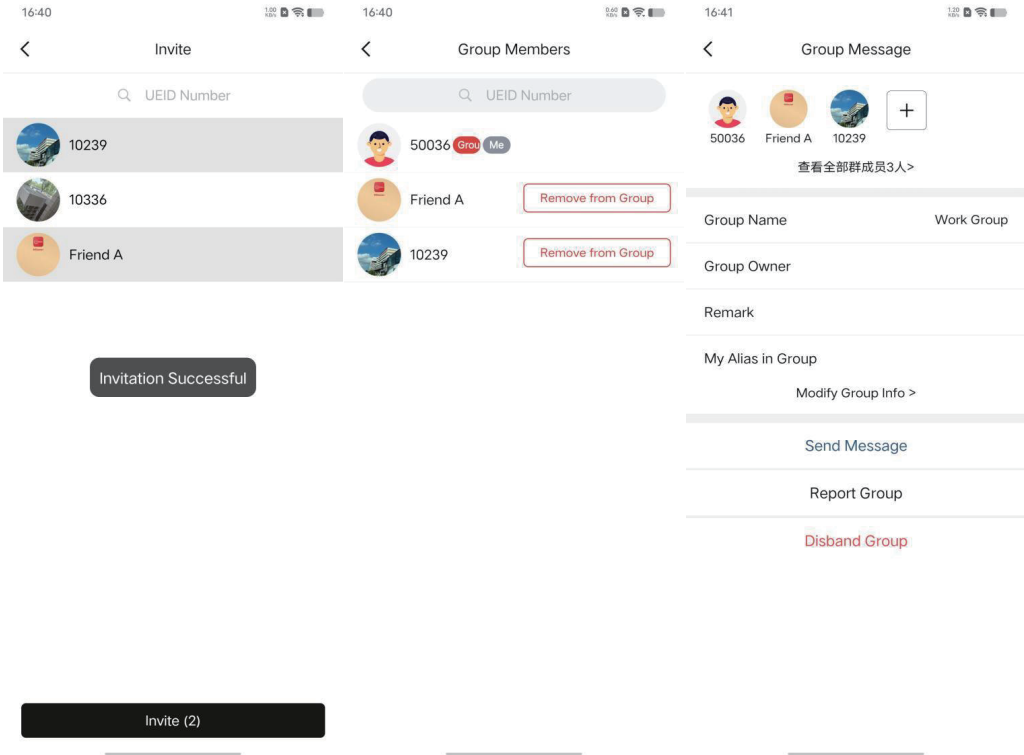
6. Setting and Management

6.1 Account Security Center

Operation path: Main interface "User Avatar" → "Settings" → "Account Security Center"

Function:

- Change login password
- Cancel account (delete all chat records, can log in again).



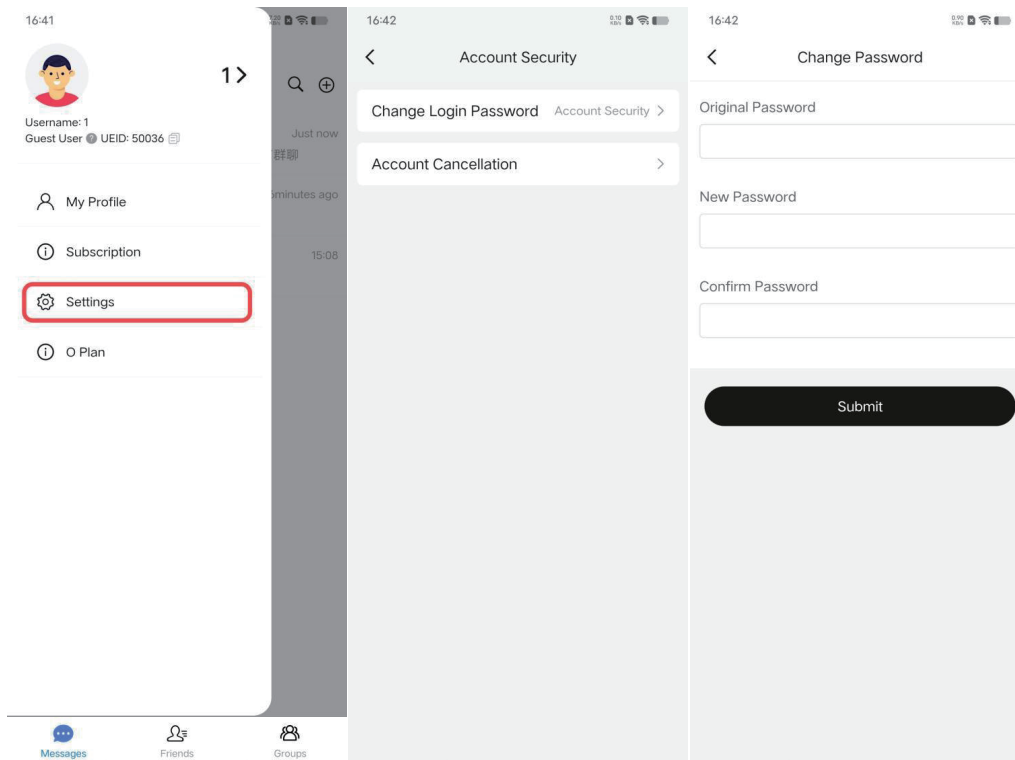


## 6.2 General

Operation path: Main interface "User avatar" → "Settings" → "General"

Function:

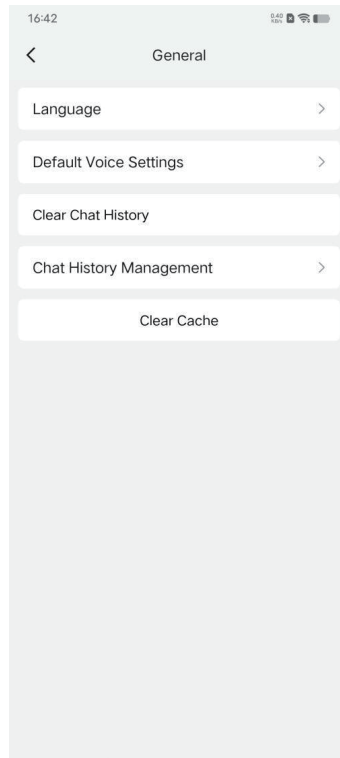
- Display language: Supports switching to Traditional Chinese/English.
- Preset voice change setting: Configure voice information preset voice change effect (male/female voice).
- Delete all chat records (non recoverable).
- Clearing cache (does not affect APP Use).



### 6.3 Notice

Operation path: Main interface "User avatar" → "Settings" → "Notifications".

Function: Set the information banner notification and content preview display switch.

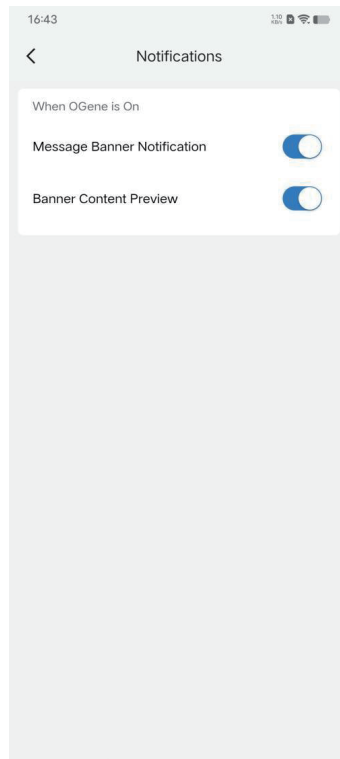


## 6.4 About OGene

Operation path: Main interface "User avatar" → "Settings" → "About OGene”

Function:

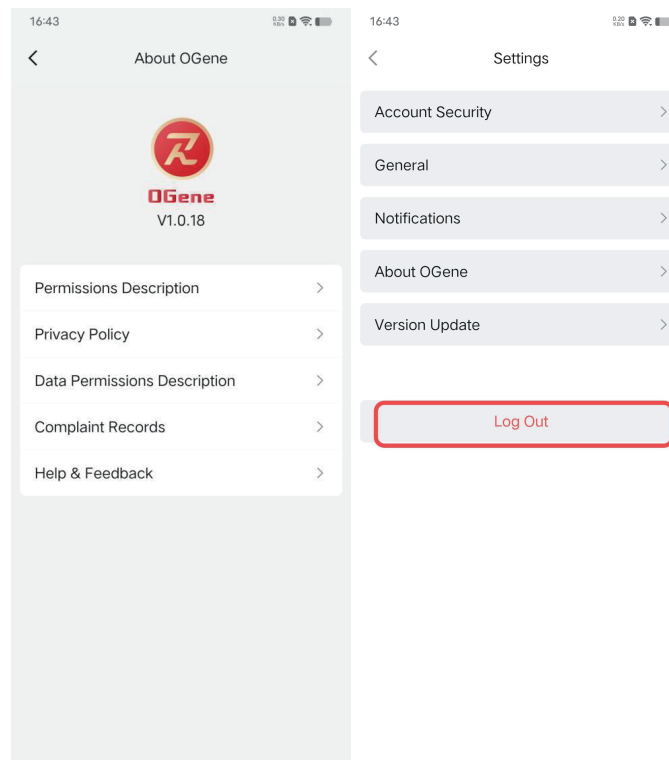
- View version information and update entry
- View permission statement, privacy policy, and data permission usage statement.
- Access the 'Help and Feedback' section (including common questions, company contact information, and a question feedback portal).



## 6.5 Log out

Operation path: Main interface "User avatar" → "Settings" → "Logout"

Function: Cancel the current account and return to the login homepage.



傲然技術有限公司  
使用者手冊